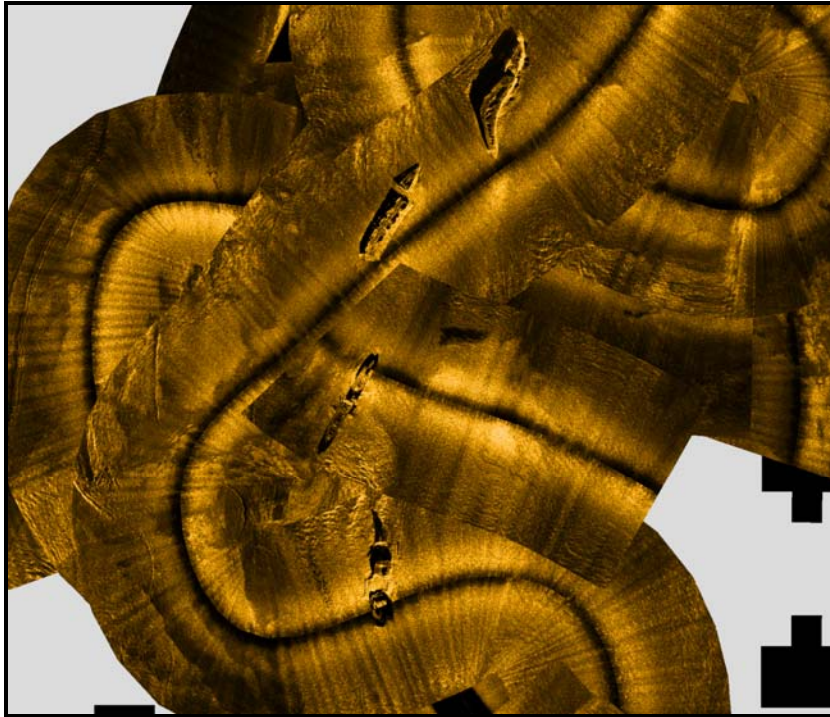


# Virginia Triangle Reef



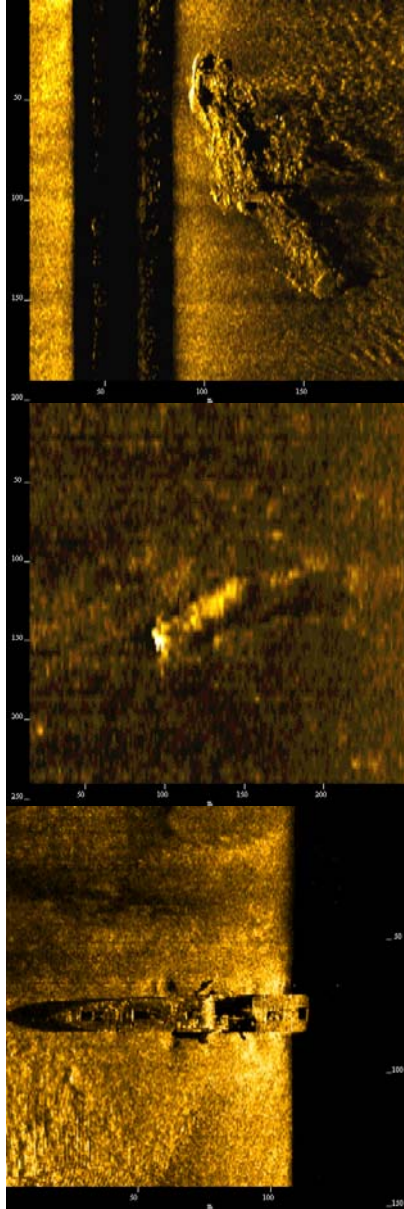
## Contacts in this report:

<b>SS Lilian Luchenbach Cuyahoga</b>	07/02/2008 15:27:10	36.976101904 Lat	-75.413941637 Lon
<b>Haviland</b>	07/02/2008 15:49:05	36.965211924 Lat	-75.380134282 Lon
<b>USNS Clark</b>	07/02/2008 16:37:07	36.990992118 Lat	-75.363670146 Lon
<b>USNS Garrison</b>	07/02/2008 17:03:46	36.988933862 Lat	-75.363072313 Lon
<b>Garrison Bow</b>	07/02/2008 16:59:16	36.993240822 Lat	-75.363036902 Lon
<b>USNS Webster</b>	07/02/2008 16:58:56	36.993764209 Lat	-75.362672591 Lon
<b>USNS Webster</b>	07/02/2008 16:57:56	36.994825149 Lat	-75.361340874 Lon
<b>USNS Morgan SE Section</b>	07/02/2008 18:24:18	37.001260667 Lat	-75.407998667 Lon
<b>USNS Morgan NW Section</b>	07/02/2008 18:24:31	37.001570000 Lat	-75.408293167 Lon
<b>USNS Morgan Debris Field</b>	07/02/2008 18:25:16	37.002683757 Lat	-75.408818207 Lon

# Report Virginia Triangle Reef

Generated on: 7/8/2008 2:13:58 PM by SonarWiz.MAP TargetReportGen (V1.13.1)

## Target Image



## Target Info

### SS Lilian Luchenbach

- Sonar Time at Target: 07/02/2008 15:27:10
- Position (Lat WGS84): 36° 58.56611' N
- Position (Lon WGS84): 075° 24.83649' W
- Map Proj: WGS 1984 UTM, Zone 18 North, Meter
- Click Position (X): 463,157.49

## User Entered Info

### Dimensions

Target Height = 0.0 Meters  
Target Length: 0.0 Meters  
Target Shadow: 0.0 Meters  
Target Width: 0.0 Meters  
Mag Anomaly:  
Avoidance Area:  
Classification 1: shipwreck  
Classification 2:  
Area:  
Block:  
Description:

### Cuyahoga

- Sonar Time at Target: 07/02/2008 15:49:05
- Click Position (Lat WGS84): 36° 57.91271' N
- Click Position (Lon WGS84): 075° 22.80805' W
- Map Proj: WGS 1984 UTM, Zone 18 North, Meter
- Click Position (X): 466,161.67
- Click Position (Y): 4,091,080.73

### Dimensions

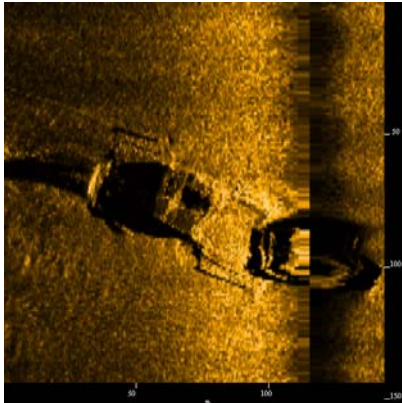
Target Height = 0.0 Meters  
Target Length: 25.1 Meters  
Target Shadow: 6.4 Meters  
Target Width: 4.8 Meters  
Mag Anomaly:  
Avoidance Area:  
Classification 1:  
Classification 2:  
Area:  
Block:  
Description:

### Haviland

- Sonar Time at Target: 07/02/2008 16:37:07
- Click Position (Lat WGS84): 36° 59.45952' N
- Click Position (Lon WGS84): 075° 21.82020' W
- Map Proj: WGS 1984 UTM, Zone 18 North, Meter
- Click Position (X): 467,638.18
- Click Position (Y): 4,093,934.89

### Dimensions

Target Height = 0.0 Meters  
Target Length: 0.0 Meters  
Target Shadow: 0.0 Meters  
Target Width: 0.0 Meters  
Mag Anomaly:  
Avoidance Area:  
Classification 1:  
Classification 2:  
Area:  
Block:  
Description:

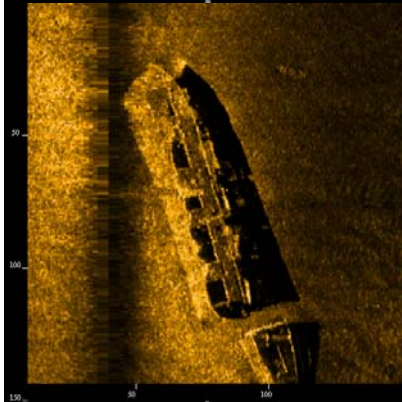


#### USNS Clark

- Sonar Time at Target: 07/02/2008 17:03:46
- Click Position (Lat WGS84): 36° 59.33603' N
- Click Position (Lon WGS84): 075° 21.78433' W
- Map Proj: WGS 1984 UTM, Zone 18 North, Meter
- Click Position (X): 467,690.51
- Click Position (Y): 4,093,706.36

#### Dimensions

Target Height = 0.0 Meters  
Target Length: 0.0 Meters  
Target Shadow: 0.0 Meters  
Target Width: 0.0 Meters  
Mag Anomaly:  
Avoidance Area:  
Classification 1: Shipwreck  
Classification 2:  
Area:  
Block:  
Description:

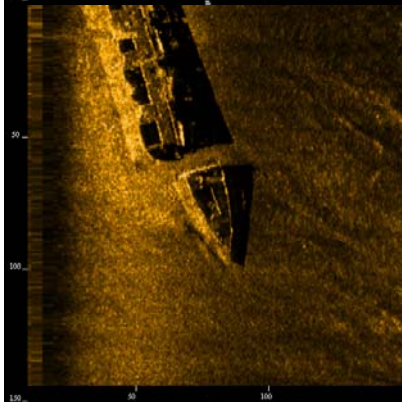


#### USNS Garrison

- Sonar Time at Target: 07/02/2008 16:59:16
- Click Position (Lat WGS84): 36° 59.59444' N
- Click Position (Lon WGS84): 075° 21.78221' W
- Map Proj: WGS 1984 UTM, Zone 18 North, Meter
- Click Position (X): 467,695.49
- Click Position (Y): 4,094,184.14

#### Dimensions

Target Height = 0.0 Meters  
Target Length: 0.0 Meters  
Target Shadow: 0.0 Meters  
Target Width: 0.0 Meters  
Mag Anomaly:  
Avoidance Area:  
Classification 1: Shipwreck  
Classification 2:  
Area:  
Block:  
Description:

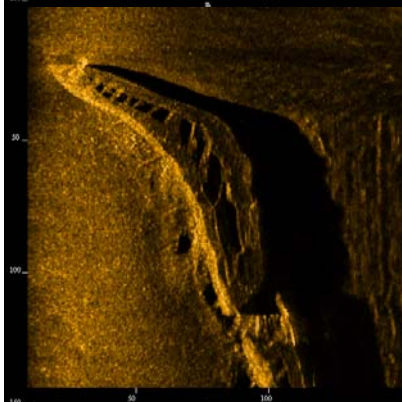


#### Garrison Bow

- Sonar Time at Target: 07/02/2008 16:58:56
- Click Position (Lat WGS84): 36° 59.62585' N
- Click Position (Lon WGS84): 075° 21.76035' W
- Map Proj: WGS 1984 UTM, Zone 18 North, Meter
- Click Position (X): 467,728.12
- Click Position (Y): 4,094,242.07

#### Dimensions

Target Height = 0.0 Meters  
Target Length: 14.0 Meters  
Target Shadow: 0.0 Meters  
Target Width: 0.0 Meters  
Mag Anomaly:  
Avoidance Area:  
Classification 1: Shipwreck  
Classification 2:  
Area:  
Block:  
Description: 46 feet between bow and main section

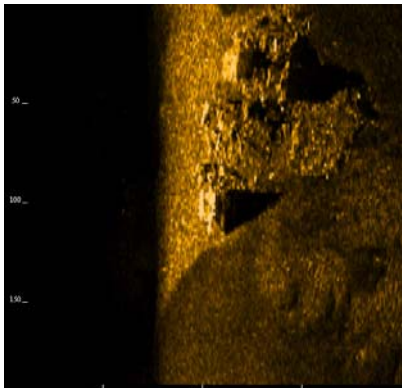


#### USNS Webster

- Sonar Time at Target: 07/02/2008 16:57:56
- Click Position (Lat WGS84): 36° 59.68950' N
- Click Position (Lon WGS84): 075° 21.68045' W
- Map Proj: WGS 1984 UTM, Zone 18 North, Meter
- Click Position (X): 467,847.07
- Click Position (Y): 4,094,359.32

#### Dimensions

Target Height = 0.0 Meters  
Target Length: 0.0 Meters  
Target Shadow: 0.0 Meters  
Target Width: 0.0 Meters  
Mag Anomaly:  
Avoidance Area:  
Classification 1: Shipwreck  
Classification 2:  
Area:  
Block:  
Description:

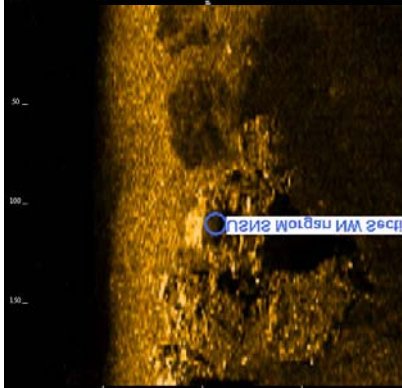


#### USNS Morgan SE Section

- Sonar Time at Target: 07/02/2008 18:24:18
- Click Position (Lat WGS84): 37° 00.07564' N
- Click Position (Lon WGS84): 075° 24.47992' W
- Map Proj: WGS 1984 UTM, Zone 18 North, Meter
- Click Position (X): 463,698.39
- Click Position (Y): 4,095,090.02

#### Dimensions

Target Height = 0.0 Meters  
 Target Length: 0.0 Meters  
 Target Shadow: 0.0 Meters  
 Target Width: 0.0 Meters  
 Mag Anomaly:  
 Avoidance Area:  
 Classification 1: shipwreck  
 Classification 2:  
 Area:  
 Block:  
 Description:

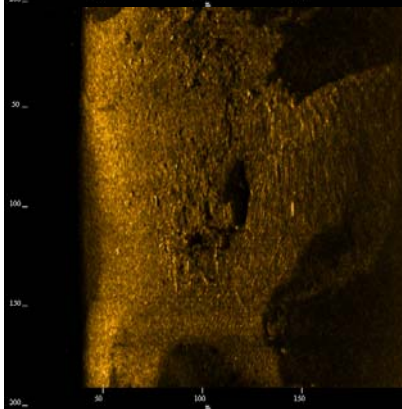


#### USNS Morgan NW Section

- Sonar Time at Target: 07/02/2008 18:24:31
- Click Position (Lat WGS84): 37° 00.09420' N
- Click Position (Lon WGS84): 075° 24.49759' W
- Map Proj: WGS 1984 UTM, Zone 18 North, Meter
- Click Position (X): 463,672.33
- Click Position (Y): 4,095,124.44

#### Dimensions

Target Height = 0.0 Meters  
 Target Length: 0.0 Meters  
 Target Shadow: 0.0 Meters  
 Target Width: 0.0 Meters  
 Mag Anomaly:  
 Avoidance Area:  
 Classification 1:  
 Classification 2:  
 Area:  
 Block:  
 Description:



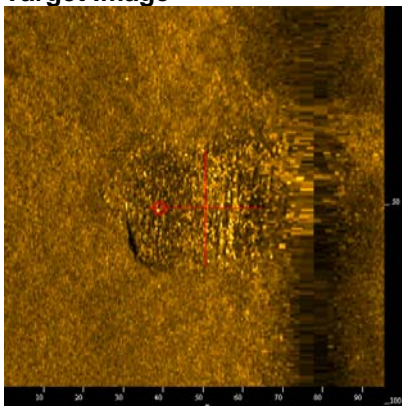
#### USNS Morgan Debris Field

- Sonar Time at Target: 07/02/2008 18:25:16
- Click Position (Lat WGS84): 37° 00.16102' N
- Click Position (Lon WGS84): 075° 24.52909' W
- Map Proj: WGS 1984 UTM, Zone 18 North, Meter
- Click Position (X): 463,626.16
- Click Position (Y): 4,095,248.19

#### Dimensions

Target Height = 0.0 Meters  
 Target Length: 0.0 Meters  
 Target Shadow: 0.0 Meters  
 Target Width: 0.0 Meters  
 Mag Anomaly:  
 Avoidance Area:  
 Classification 1:  
 Classification 2:  
 Area:  
 Block:  
 Description:

#### Target Image



#### Target Info

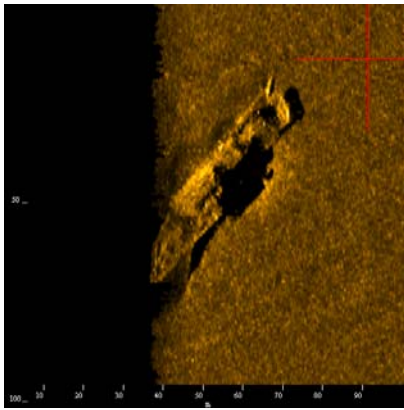
##### Submarine Cable

- Sonar Time at Target: 07/02/2008 16:10:09
- Click Position (Lat WGS84): 36° 59.01174' N
- Click Position (Lon WGS84): 075° 23.00945' W
- Map Proj: WGS 1984 UTM, Zone 18 North, Meter
- Click Position (X): 465,871.06
- Click Position (Y): 4,093,113.92

#### User Entered Info

##### Dimensions

Target Height = 0.0 Meters  
 Target Length: 47.0 Meters  
 Target Shadow: 0.0 Meters  
 Target Width: 25.3 Meters  
 Mag Anomaly:  
 Avoidance Area:  
 Classification 1: Submarine Cable  
 Classification 2:  
 Area:  
 Block:  
 Description:



#### **USCGC\_Cuyahoga**

- Sonar Time at Target: 07/02/2008 15:54:47
- Click Position (Lat WGS84): 36° 57.90356' N
- Click Position (Lon WGS84): 075° 22.79878' W
- Map Proj: WGS 1984 UTM, Zone 18 North, Meter
- Click Position (X): 466,175.36
- Click Position (Y): 4,091,063.75

#### **Dimensions**

Target Height = 0.0 Meters  
Target Length: 31.3 Meters  
Target Shadow: 26.1 Meters  
Target Width: 4.7 Meters  
Mag Anomaly:  
Avoidance Area:  
Classification 1: Shipwreck  
Classification 2:  
Area:  
Block:  
Description:

Virginia\_Triangle\_Reef..doc  
(V1.13.1)

7/8/2008 2:14:19 PM

TargetReportGen